

HAPMAN



01 GENTLE

Carefully transports food products such as nuts, coffee, frozen foods, snack foods and more, without damage, preserving product integrity.

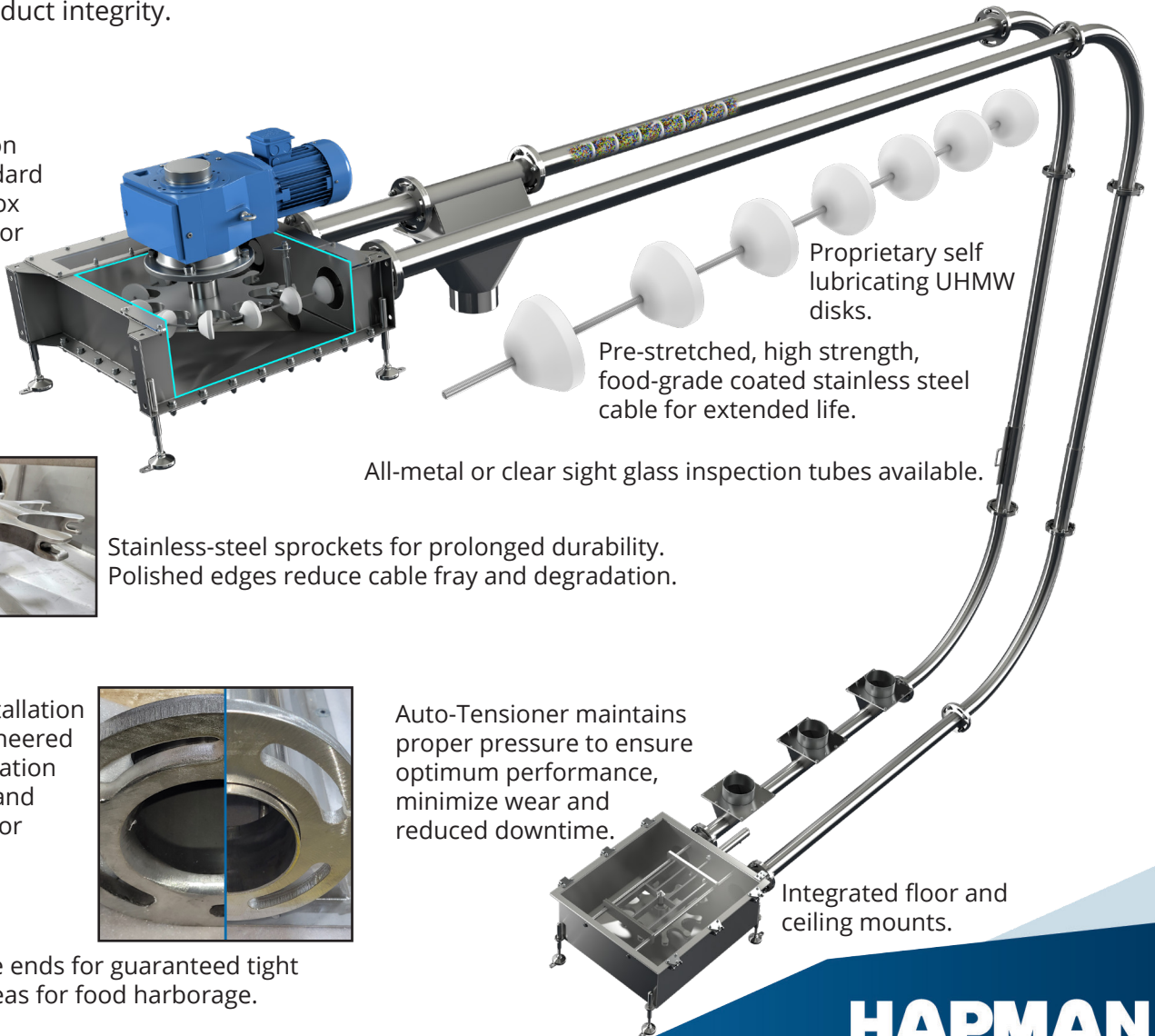
02 CLEAN

100% FDA compliant materials including flights, ferals, cable and coating, following industry-standard food safety protocols.

03 EASY

Engineered for easy installation and maintenance, minimizing downtime and ensuring consistent sanitation standards.

Clear inspection windows standard on the drive box and available for the idler box.



Proprietary self lubricating UHMW disks.

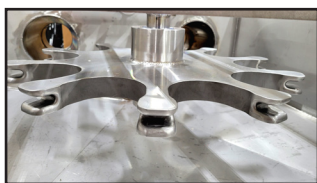
Pre-stretched, high strength, food-grade coated stainless steel cable for extended life.

All-metal or clear sight glass inspection tubes available.

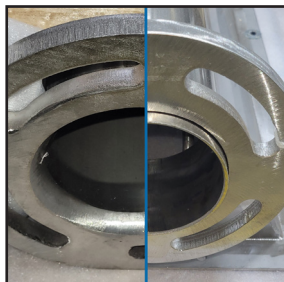
Stainless-steel sprockets for prolonged durability. Polished edges reduce cable fray and degradation.

Auto-Tensioner maintains proper pressure to ensure optimum performance, minimize wear and reduced downtime.

Integrated floor and ceiling mounts.



Labor saving installation with tubing engineered and cut to application length, flanged, and match-marked, for faster assembly.

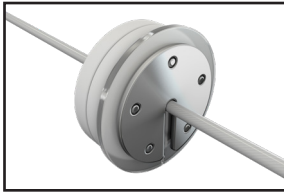


Fully seated tube ends for guaranteed tight gap, avoiding areas for food harborage.

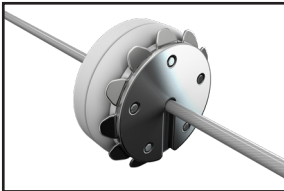
HAPMAN



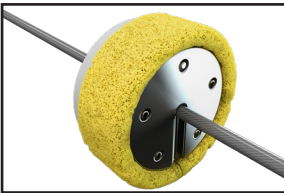
Cleaning Options



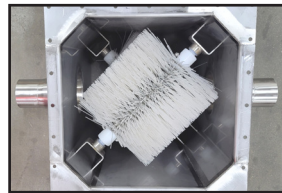
Wiper Disk: Designed to remove accumulating fines and particles during or assist removing liquid after cleaning.



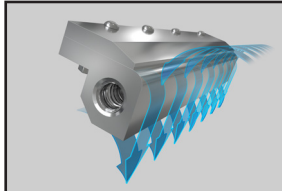
Scraper Disk: Works to dislodge material that has stuck to the casing walls.



Sponge Disk: Single-use sponge utilized to apply cleaning agents and assist removal of liquid after washdown.



Brush Box: Added after the last discharge point to mechanically brush off the cable and disks.



Air Knife: A strategically placed device that uses compressed air to blow off accumulating fines from the disks.

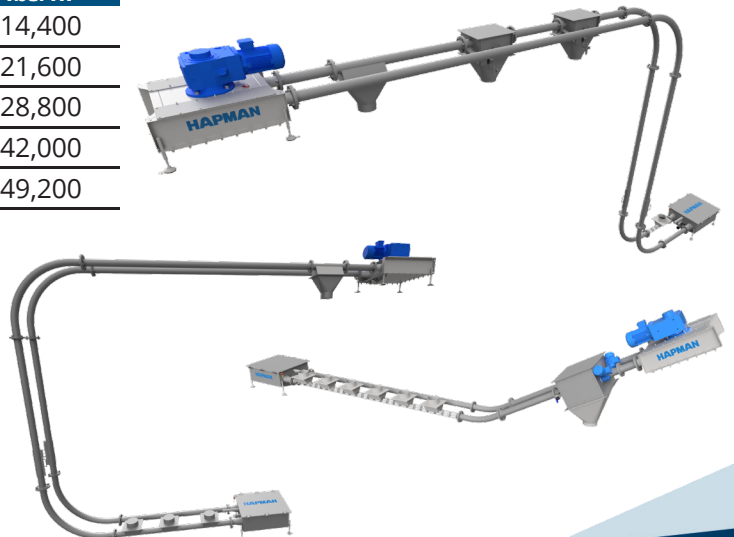


Clean in Place: The fully sealed system with integral drain points enables water, foam and chemical cleaning methods

Convey Speed ft/min	4" Conveyer Capacity		6" Conveyer Capacity	
	ft ³ /min	lbs/hr	ft ³ /min	lbs/hr
40	2.5	6,000	6	14,400
60	3.75	9,000	9	21,600
80	5	12,000	12	28,800
120	7.5	18,000	17.5	42,000
140	8.75	21,000	20.5	49,200

*Assumes 40 lb/ft³ bulk density and approximately 80% pocket fill

Drive Type	Motor HP	Convey Speed Range ft/min
Low-Speed	5	40-120
High-Speed	5	75-145



For more information about Hapman and our products, visit us online at www.hapman.com.

5944 East N Avenue Kalamazoo, MI 49048
(800) 427-6260 | sales@hapman.com